

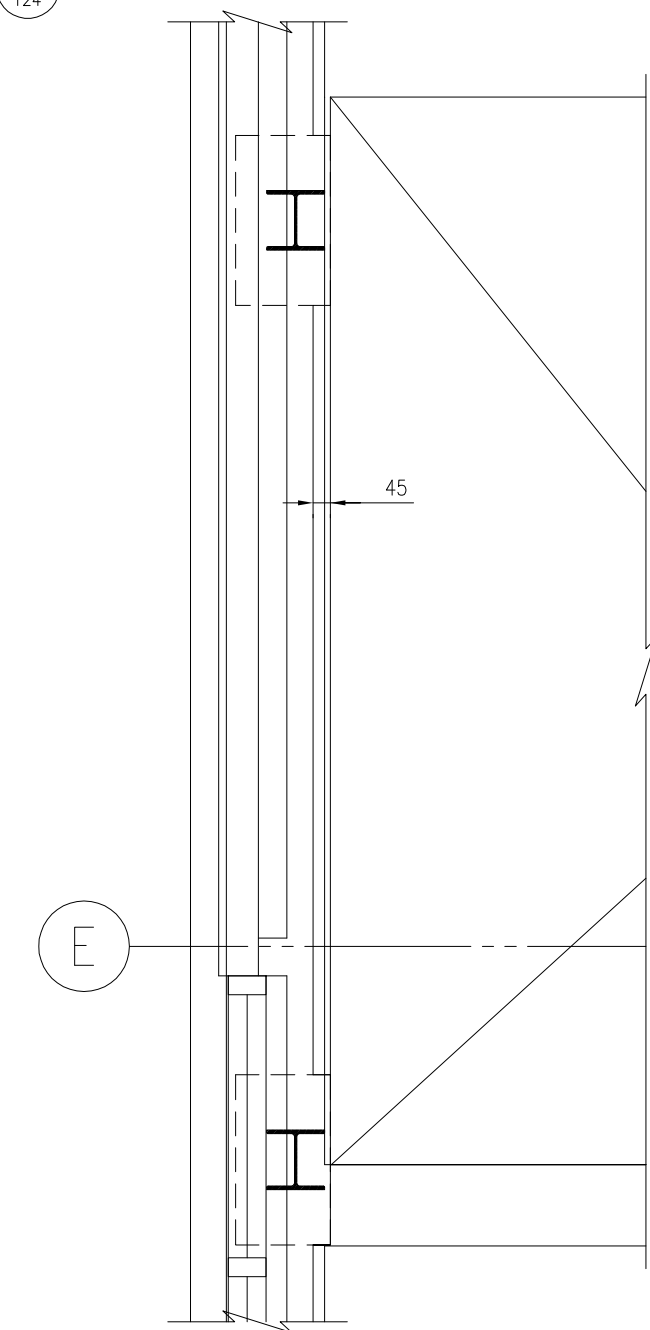
FIFTH FLOOR PLAN.
(1:100)

HOLE SCHEDULE	
HOLE REF.	SIZE.
1	150 x 150
2	200 x 200
3	330 x 200
4	125 x 125 HOLE THROUGH UPSTAND DIRECTLY ABOVE S.S.L
5	400 x 175 AND 175 x 125 HOLE THROUGH DOWNSTAND DIRECTLY BELOW SOFFIT

NOTE - FOR EXACT LOCATION OF SERVICE HOLES REFER TO ARCHITECTS AND SERVICE ENGINEERS DRAWINGS

BASEPLATE SCHEDULE	
REF.	TYPE
(A)	400 x 200 x 15mm THICK EDGE ALIGNED WITH FLANGE OF BEAM
(B)	400 x 200 x 15mm THICK CENTRALLY ALIGNED
(C)	300 x 300 x 15mm THICK
(D)	300 x 300 x 200 x 15mm THICK L-SHAPED
(E)	400 x 200 x 15mm THICK EDGE ALIGNED WITH TOES OF BEAM

FOR BASEPLATE DETAILS SEE DRAWING 8459/124



ENLARGED DETAIL
(1:20)

NOTES.

- GENERAL
 - This drawing is not to be scaled, work to figured dimensions only, confirmed on site.
 - This drawing is to be read in conjunction with all relevant architectural drawings, detailed specifications where applicable and all associated drawings in this series.
 - Any discrepancy on this drawing is to be reported immediately to the partnership for clarification.
 - The contractor is responsible for all temporary works and for the stability of the works in progress.
- CONCRETE AND REINFORCEMENT.
 - Materials and workmanship to all be in accordance with BS 5328, BS 8110 and concrete specification (Clause numbers indicated thus).
 - Mass concrete and blinding to be GEN 1 to BS 5328 (E10/101).
 - Reinforced concrete to be RC35 to BS 5328 (E10/100).
 - Cover to reinforcement to be :- 25mm Internal
40mm External
 - Formwork finishes to be as follows :-
Ground Beams - Basic (E20/610 in concrete specification).
Faces of walls to receive waterproofing - plain smooth (E20/620).
Faces exposed to view in car park and core areas - fine smooth (E20/630).
Soffites and edges of slab and upstands in superstructure - plain smooth (E20/620).
 - Worked finishes to be as follows :-
Ground Beams - Tamped (E41/210).
Surfaces to receive screed or waterproofing - smooth floated (E41/310).
Car park - smooth floated (E41/310).
Internal slabs - power floated (E41/410).
 - Contractor to provide all necessary reinforcement spacers and chairs to support reinforcement in correct position during construction.

SLAB AT LIFT CORE AMENDED. HOLES AMENDED IN ACCORDANCE WITH FRC DRAWINGS. DIMENSIONS, ENLARGED DETAIL & BASEPLATE SCHEDULE ADDED.	31/08/00	M.PACIFICO	C
STAIRCASES INDICATED, LIFT CORE C POSITION REVISED. LIFT CORES AMENDED. SECTION MARKERS ADDED AND AMENDED.	12/06/00	M.PACIFICO	B
REDRAWN FROM ARCHITECTS PLAN	03/03/00	M.PACIFICO	A
FIRST ISSUE	10/12/99	M.PACIFICO	Rev. No.

Client
BERKELEY HOMES (SOUTHERN) LTD

Project
24-30 MARINE PARADE
BRIGHTON, EAST SUSSEX

Title
FIFTH FLOOR
GENERAL ARRANGEMENT

H E M S L E Y O I R R E L L P A R T N E R S H I P
CONSULTING CIVIL & STRUCTURAL ENGINEERS

● HOP HOUSE, 41 Church Road, Hove, East Sussex BN3 2BE
Tel : (01273) 223900
Fax : (01273) 326767
Email : hophouse@dal.pipex.com

○ 151 Western Road, Hove, East Sussex RH16 3JH
Tel : (01444) 457756
Fax : (01444) 455953
Email : hop@hivemind.net

Scales	Date	Drawn	Engineer	Checked	Approved
1:100	FEB 2000	M.PACIFICO	A.HUMPHREY	D.JONES	D.JONES
Project No.	8459	Task No.	02	Dwg. No.	106
Rev. No.					C